

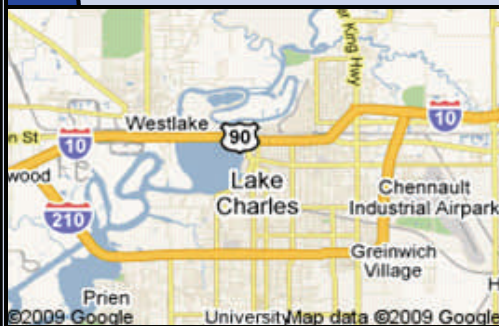
## CALL FOR ABSTRACTS

The abstract deadline is December 15, 2009. Should you need extended time, it is crucial that you notify us by email. Abstracts should be limited to 500 words or less.

Please submit abstracts to [sjones@spine-brain.com](mailto:sjones@spine-brain.com)

## DIRECTIONS

From New Orleans: Take I-10 West to Lake Charles. Merge West onto the I-210 Loop. Take Exit #4 at Nelson Road. Veer right off the Exit ramp onto Nelson Road. Follow Nelson Road straight into L'Auberge du Lac.



### Accreditation:

This activity has been planned and implemented in accordance with the Essentials and Standards of the Accreditation Council for Continuing Medical Education through the joint sponsorship of the American Association of Neurological Surgeons (AANS) and the Louisiana Neurosurgical Society. The AANS is accredited by the Accreditation Council for Continuing Medical Education (ACCME) to provide continuing medical education for physicians. Physicians should only claim credit commensurate with the extent of their participation in the activity.

### Designation:

AMA PRA Category 1Credit(s)<sup>™</sup> will be provided

### Disclosure:

The AANS controls the content and production of this CME activity and attempts to ensure the presentation of balanced, objective information. In accordance with the Standards for Commercial Support established by the Accreditation Council for Continuing Medical Education (ACCME), anyone in a position to control the content of the educational activity (speakers, paper presenters/authors, co-authors, staff, and the significant others of those mentioned), are asked to disclose any relationship they have with commercial interests which may be related to the content of their lecture. The ACCME defines "relevant financial relationships" as financial relationships in any amount occurring within the past 12 months that create a conflict of interest. The ACCME defines a "commercial interest" as any entity producing marketing, re-selling, or distributing healthcare goods or services consumed by, or used on, patients. Failure or refusal to disclose or the inability to satisfactorily resolve the identified conflict may result in the withdrawal of the invitation to participate. Disclosures will be published in the program booklets.



Erich W. Wolf, M.D., Ph.D., F.A.C.S.

President

1614 Wolf Circle  
Lake Charles, LA 70605  
(337) 478-9653



Brian Willis, M.D.

Treasurer

1501 Kings Highway  
Shreveport, LA 71103  
(318) 675-6404

LANS 2010 ANNUAL MEETING  
PO Box 1786, Lake Charles, LA 70602  
[sjones@spine-brain.com](mailto:sjones@spine-brain.com)

# 2010 ANNUAL MEETING

## Louisiana Neurosurgical Society



January 15-16, 2010

L'Auberge du Lac Casino Resort  
Lake Charles, Louisiana

Jointly Sponsored by:

Jointly sponsored by:



American Association of Neurological Surgeons



## WHO SHOULD ATTEND

The educational sessions are designed for neurological surgeons, residents, nurse clinicians and physician assistants, and will be directly applicable to their practices.

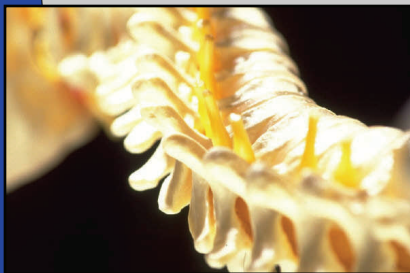
## MEETING PURPOSE

The purpose of the 2010 Louisiana Neurosurgical Society Annual Meeting is to provide continuing medical education to neurosurgeons, residents, and physician extenders involved in the practice of Neurosurgery. Education is provided in the form of didactic lectures, a Scientific Session with resident presentations, and exhibits presenting the newest instruments and information.

## LEARNING OBJECTIVES

Upon completion of this CME activity, participants should be able to:

- 1) Discuss new technologies relating to the treatment of spinal disease that are anticipated to become part of the neurosurgical armamentarium within the next decade.
- 2) Identify ways of integrating a Radiology PACS system into a community-based neurosurgical practice.
- 3) Discuss current state and federal legislation which will impact medical practice.



## MEETING AGENDA

### Friday January 15, 2010

6:00 – 9:00 p.m. Reception / Dinner

### Saturday January 16, 2010

6:00 – 9:00 a.m. Exhibitors Set-up

7:00 - 8:00 a.m. Registration & Continental Breakfast

8:00 – 8:10 a.m. LANS Presidential Opening Comments & Welcome

8:10 – 9:45 a.m. Scientific Paper Presentations

9:45 – 10:00 a.m. Break with Exhibitors

10:00 – 11:15 a.m. Honored Guest  
Dr. Kevin Foley  
New Technologies

11:15 – 12:00 p.m. Dr. Anil Nanda  
Petroclival Meningiomas

12:00 – 1:00 p.m. Lunch  
Guest Speaker  
Professor William Craft Brumfield  
Architecture in Russia

1:00 – 1:30 p.m. Guest Speaker  
Health care reform for Louisiana

1:30 – 1:45 p.m. Dr. Erich Wolf  
Intergrating Radiology PACS system  
into Neurosurgical Practices

1:45 – 2:00 p.m. Break with Exhibitors

2:00 p.m. LANS Business Meeting

Adjourn

## ACCOMMODATIONS

L'Auberge du Lac Casino Resort—Rising 26 stories over Lake Charles, provides a heightened sense of relaxation. With approximately 1,000 hotel rooms, with added touches like plush amenities, elegant furnishings and a rustic yet contemporary theme, it's easy to relax in luxury. Unwind in one of the spacious guest rooms, each one refined and elegant. Rooms feature a contemporary, rustic décor, and are well appointed with amenities. From shopping bags to golf bags, there's no shortage of things to do. Golf the only public Tom Fazio course in Lake Charles. Browse through the collection of fine shops, or just unwind with a specialized treatment at Spa du Lac.



## LUNCH GUEST SPEAKER

**Professor William Craft Brumfield**  
Professor Brumfield is Professor of Slavic Studies at Tulane University, where he also lectures at the School of Architecture. He has numerous publications on Russian Architecture, photography, and literature. His photographs of Russian Architecture have been exhibited in several galleries and museums, and are part of the collection of the Photographic Archives at the National Gallery of Art, Washington, D.C. LANS is delighted to have Professor Brumfield speak during our lunch hour.